

# Town of Mendon

## Stormwater Infrastructure Mapping Project

September 2021



***VTDEC – CLEAN WATER INITIATIVE PROGRAM,  
WATER INVESTMENT DIVISION***

<https://dec.vermont.gov/water-investment/cwi/solutions/developed-lands/idde>

Jim Pease, [Jim.Pease@vermont.gov](mailto:Jim.Pease@vermont.gov)  
David Ainley, [David.Ainley@vermont.gov](mailto:David.Ainley@vermont.gov)

## Overview

This stormwater infrastructure mapping project was completed for the municipality by the Agency of Natural Resources Clean Water Initiative Program to supplement the existing drainage data collected by the town and with the intention of providing a tool for planning, maintenance, and inspection of the stormwater infrastructure.

The GIS maps and geodatabase are meant to provide an overall picture and understanding of the connectivity or connectedness of the storm system on both public and private properties. They can be used to: (1) raise the awareness of the need for regular maintenance, the generation and transport of nonpoint source pollution increases with increasing connectivity of a drainage system, (2) as a valuable tool for hazardous material spill planning and prevention, (3) for the detection and elimination of illicit discharges; outfall locations and system connectedness data are used as a base for locating illicit or illegal discharges of non-stormwater to the municipal storm system and tracing them up to the source, (4) better assist the municipality in planning and implementing combined stormwater-sewer separation projects, (5) inform options for cleaning up existing polluted stormwater discharges; this report provides information and guidance for potential retrofit treatment locations and opportunities, (6) assist municipalities and residents with emergency preparedness for large rainfall events (i.e. Tropical Storm or Hurricanes) or spring snowmelt runoff events, by keeping storm drains clean, clear and open a good deal of localized flooding could be prevented, and (7) the basis for a local stormwater ordinance or be used to help enhance an existing stormwater management program.

## Project Summary

The principal goal of this project was to develop up to date municipal drainage maps. These drainage maps were created showing the paths that stormwater runoff travels from where it falls on impervious surfaces such as parking lots, roads, and rooftops, to the outfall points in various receiving waters. These maps show the stormwater infrastructure including features like pipes, manholes, catchbasins, and swales within a municipality. Data sources included data collected from field work, a mapping grade Trimble GPS unit, available state permit plans, record drawings, town plans, WWMD plans, existing GIS data from contractors, and the input and guidance of knowledgeable members from the municipalities.

A second goal of this project was to establish potential locations for Best Management Practice (BMP) stormwater retrofit sites. These are sites where stormwater treatment structures could be added and where they would be most cost effective and efficient for sediment and phosphorus or nitrogen removal. In order to develop a retrofit site list, drainage area subwatersheds were delineated around the drainage networks. Determining how the stormwater infrastructure was connected was necessary in determining the subwatershed drainage areas within the town.

Delineating the drainage areas was done using the stormwater infrastructure maps, along with satellite imagery, a Digital Elevation Model (DEM), and USGS topographic maps. These data sources were used to approximate where the land area within each municipality was draining to; as well as where the high points were that divided the sub-drainage areas. The completed maps show the drainage coverage for essentially the entire municipality, but with a focus on areas with greater concentrations of impervious cover.

Impervious cover layers were created by either hand digitization or by using a method of raster pixel calculation (with ArcGIS spatial analyst extension) to create a vegetation index using the best available 4 band imagery (2016 NAIP). The area which contrasted with the vegetation represents impervious surfaces and was then modified with buffered water and roads layers to make it more accurate. A more detailed explanation of this process is available in a separate document. The impervious layer was used to calculate the

percent of each delineated drainage area that would generate stormwater runoff. The percentage of impervious surface number for each subwatershed was then adjusted with a connectivity rating. A rating was assigned to each drainage area polygon describing how directly connected the impervious surfaces within that subwatershed are to the receiving water. By adjusting the percent impervious area numbers with this connectivity rating the effective impervious area (EIA) was established for each subwatershed (*Sutherland, 1995*). This effective impervious number is a more accurate description of the amount of runoff produced by each of the subwatersheds because it helps to take factors such as infiltration into account.

After the effective impervious numbers were calculated for the subwatersheds the Simple Method was used to estimate the annual sediment (TSS) and phosphorus (TP) or Nitrogen (TN) loads generated by each subwatershed. The Simple method uses information which includes the adjusted impervious value, average annual rainfall for the location, total subwatershed area, and a given pollutant concentration value to calculate an annual load for various pollutants (*Schueler, 1987*). Pollutant loads estimated by the Simple Method in this project are planning level estimates and are meant to give a general idea of the amounts of sediment or nutrient wash-off produced by each subwatershed for prioritization purposes. Subwatersheds were then prioritized, using the loading calculations as well as other criteria, and given Action List numbers ranging from 1 to 3 (one being the highest priority). Action List Priority 4 is reserved for properties with more than 3 acres of impervious cover and impacted by VTDEC General Permit 3-9050 and its requirement to retrofit the impervious cover on the parcel to new water quality design standards. The Action List number depends both upon loading values and feasibility of potential retrofit treatment options. Potential retrofit options listed in the TARGET maps are based on field observations and not on actual availability of land or willingness of landowner.

Water Quality Volume (WQv – the amount of storage needed to treat stormwater from a 0.9-1.0-inch storm) and Channel Protection Volume (CPv – the volume of storage that is needed to hold and slowly release stormwater for a 2.1 inch rain event) were also calculated for delineated subwatershed areas. CPv calculations are only applicable if the receiving water is not a large body of water and is therefore susceptible to channel erosion. These numbers were used in the retrofit recommendation process because the volume of water to be treated was a key factor in determining the type of retrofit.

### ***Project References***

*Schueler, T. 1987. Technical Documentation of a Simple Method for Estimating Urban Storm Pollutant Export. Controlling Urban Runoff: A Practical Manual for Planning and Designing Urban BMPs. Appendix A.*

*Schueler, T. et.al., 2007. Urban Stormwater Retrofit Practices, Version 1.0. Manual 3, Center for Watershed Protection, August 2007.*

*Sutherland, R. 1995. Methodology for Estimating the Effective Impervious Area of Urban Watersheds. Technical Note 58 – Pervious Area Management. Watershed Protection Techniques. Vol. 2, No. 1*

**\*All data was created in an ArcGIS 10 Geodatabase format and is available from VTDEC.**

## *Act 64 Municipal Roads General Permit (MRGP)*

The 2015 Vermont Legislature adopted Act 64 which will require all municipalities to address stormwater runoff from all hydrologically connected existing municipal roads. In January 2018 the final general permit was issued; municipalities must file a notice of intent to comply with the permit by July 31, 2018. As part of this permit all municipalities will be required, as explained below, to evaluate connected road segments with catch basin served infrastructure to determine compliance with MRGP Standards by December 31, 2020 as part of their road erosion inventory. The permit will require:

- Municipalities to develop road stormwater management plans. These plans will include a comprehensive (1) Road Erosion Inventory (REI) of hydrologically-connected road segments and (2) an Implementation Table.
- The inventory will include an evaluation of municipal hydrologically-connected road segments to determine if they meet the MRGP standards.
- Those road segments that do not currently meet MRGP standards and that can impact waterways will be prioritized for remediation within the Implementation Table. DEC has developed an Implementation Table-Portal for this purpose.

Municipalities will submit annual reports to DEC due on April 1<sup>st</sup> starting in 2019. The Annual Reports will document progress in upgrading roads to meet MRGP standards. Municipalities will be able to use the spread sheet, mentioned above, for annual compliance reporting requirements. This report and the mapping information contained in it can be used by municipalities to develop the plan for the paved road segments with catchbasins that are hydrologically directly connected. The map(s) and data provided with this report indicate where these road segments outfalls are located using the best available mapping information DEC has to date. The MRGP standard for paved roads with catch basins is that any outfalls that are eroded will have to be stabilized with practices such as stone aprons, culvert headwalls, and stone-lined ditches. As with other classes of roads covered by this permit the municipality should first check the maps provided. DEC suggests municipalities take the following steps to check the maps and/or data provided to determine what outfalls will require municipal attention for erosion repair:

- 30 Using the provided maps and/or data as a guide confirm that the road draining to this outfall is paved," and the discharge pipe from the catchbasin\*<sup>s</sup>+is directly discharging to waters of the state. Include" any outfall from these road segments that discharges within 500 linear feet of surface waters.
- 40 Using the maps locate the outfall and note any level of erosion present in the outfall and/or in the 500" foot or less long swale between the pipe outlet and waters of the state.
- 50 Prepare a list of all outfalls with notes pertaining to the erosion using the Guidance and Field Sheet or" the i-phone application.

### **Inventory Guidance:**

[http://dec.vermont.gov/sites/dec/files/wsm/stormwater/docs/Permitinformation/MunicipalRoads/sw\\_ "MRGP\\_PavedRoadsWithCathBasins\\_REI-Supplement.pdf](http://dec.vermont.gov/sites/dec/files/wsm/stormwater/docs/Permitinformation/MunicipalRoads/sw_ )

### **Field Sheet (use form C only):**

[http://dec.vermont.gov/sites/dec/files/wsm/stormwater/docs/Permitinformation/MunicipalRoads/sw\\_ "MRGP\\_RoadErosionInventory.pdf](http://dec.vermont.gov/sites/dec/files/wsm/stormwater/docs/Permitinformation/MunicipalRoads/sw_ )

### **I-phone Application:**

<http://vtanr.maps.arcgis.com/home/item.html?id=fe11c5ffd0d04eeca968115d84dacf90>

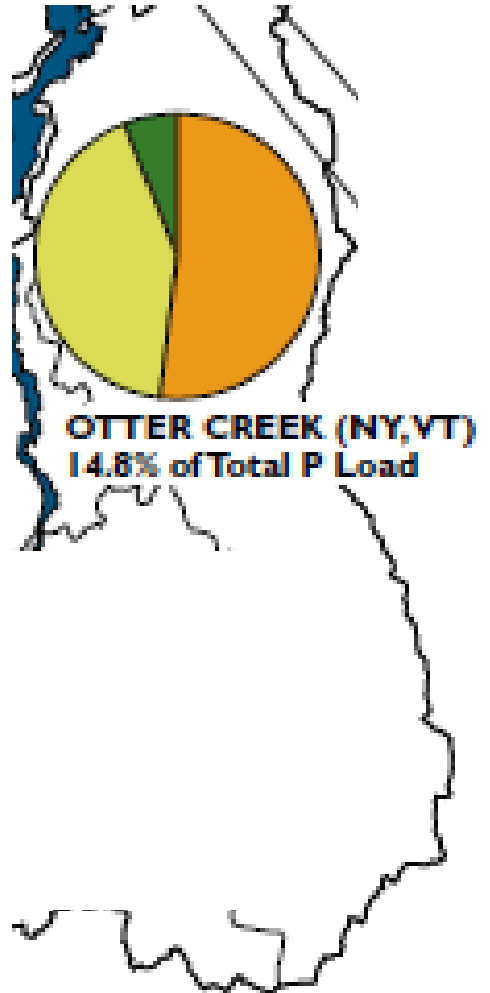
Please contact Jim Ryan at Jim.Ryan@vermont.gov for user ID and password

# Otter Creek Nonpoint Phosphorus Overview

## LAND USE TYPES

<b>DEVELOPED</b> All roads, cities, suburbs, lawns and large-lot buildings.		<b>AGRICULTURE</b> Crop and livestock production.		<b>FORESTED</b> Areas covered primarily with trees.	
--	--	--	--	--	--

Figure shows the breakdown of contributions from developed, agricultural and forested land sources in the Otter Creek Watershed to Total Phosphorus loading of the Lake.



●	~	Phosphorus in Lake (p. 5)	<b>PHOSPHORUS</b>
●	~	Nonpoint source loading to Lake (p. 7-8)	
●	~	Wastewater facility loading to Lake (p. 10)	

●	👍	Beach closures from bacteria <sup>+</sup> (p. 12-13)	<b>HUMAN HEALTH &amp; TOXINS</b>
●	~	Cyanobacteria blooms <sup>+</sup> (p. 14)	
●	~	Fish advisories for toxins <sup>+</sup> (p. 14)	

STATUS	TREND
● GOOD	👍 IMPROVING
● FAIR	~ NO TREND (neither improving nor deteriorating)
● POOR	👎 DETERIORATING
⊘ NO STATUS DATA IS AVAILABLE	⊘ NO TREND DATA IS AVAILABLE

\* Figures taken from Lake Champlain Basin Program – *State of the Lake and Ecosystem Indicators Report (2018)*.

# *Subwatershed Data*

*Tables showing calculations and  
Priority drainage area retrofit possibilities*

This is a key showing the abbreviations of the different funding programs listed in the calculation sheets.

<b>Abbreviation Key</b>	
<b>Code</b>	<b>Funding Program</b>
BR	Better Roads-VTrans
ERP/CWIP	VTDEC Clean Water Initiative Program
LCBP	Lake Champlain Basin Program
LISFF	Long Island Sound Futures Fund
SRF	Clean Water State Revolving Loan Fund
VTrans	Vermont Agency of Transportation Alternatives or Municipal Highway and Stormwater Mitigation Programs

This is a key showing the abbreviations of the stormwater treatment structures or practices listed in the reports.

<b>Abbreviation Key</b>	
<b>Code</b>	<b>Structure Type</b>
BB	Baffle Box
BFCB	Baffled Catchbasin
BRA	Bioretention Area or Raingarden
BS	Buffer Strip (25' Min.)
CB	Catch Basin
CBI	Catch Basin Insert
CD	Check Dam
CR or ESRD	Impervious Disconnection Credits
DP/DS	Dry Pond or Dry Swale
DW	Drywell
EDP (EDPMP)	Extended Detention Pond (with Micropool)
GS	Grass Swale
IB/ IG	Infiltration Basin or Infiltration Gallery
MOD	Modifications/upgrade to 2017 SW Standards
OF	Overland Flow
OGF	Organic Filter
PA/PC/PV	Pervious Asphalt or Pervious Concrete or Pervious Pavers
POP	Pocket Pond
PP	Perforated Pipe or Underdrain
PS	Pump Station
RDD	Roof Drain Disconnect
RR/RS	Rock Riprap or Rock Swale
SB	Sedimentation Basin
SF	Sand Filter (aka Surface Sand Filter)
SS or VS	Swirl Separator
SWPPP	Stormwater Pollution Prevention Plan
TT	Treatment Tank
URB	Underground Tank
WL/WP/WS	Wetland (Constructed) or Wet Pond or Wet Swale (aka Bioswale)

Mendon 2021 - Subwatershed Prioritization and Recommendations										
Watershed Number	Action List #	Proposed Action	Proposed or Existing Stormwater Treatment Practice	Permit Number	Watershed Area (Acres)	Percent Mapped Impervious Area (MIA)	Sediment Load with Current Reductions (lbs.)	Sediment Load with Priority Action (lbs.)	Phosphorus Load with Current Reductions (lbs.)	Phosphorus Load with Priority Action (lbs.)
2 Mendon			OF		267.3	8.6	25751	25751	71.5	71.5
3 Mendon	1	Swirl separator on State land or ROW at 84 Rte 4 Mendon	VS/GS		104.6	2.0	7282	1456	20.2	18.2
4 Mendon			OF/CB		30.2	8.4	2886	2886	8.0	8.0
5 Mendon	1	Infiltration basin on Town Land on Orchard Rd	IB/OF/CB/GS		24.3	13.0	2978	298	8.3	0.8
6 Mendon			OF/CB		24.6	6.6	2122	2122	5.9	5.9
7 Mendon			OF/CB/GS		16.3	3.3	1199	1199	3.3	3.3
8 Mendon			OF		11.5	4.1	878	878	2.4	2.4
9 Mendon			OF		10.2	10.6	1100	1100	3.1	3.1
10 Mendon			OF/CB		8.3	5.0	662	662	1.8	1.8
11 Mendon			OF/GS/IB	3755-9010	12.7	13.8	113	113	0.3	0.3
12 Mendon			GS/WP		4.2	8.0	235	235	0.9	0.9
14 Mendon			CB/RS/OF		228.0	2.9	18987	18987	52.7	52.7
15 Mendon			OF/CB/BRA/DP	8927-9015	103.9	3.2	5790	5790	16.1	16.1
16 Mendon			CB/OF		8.9	19.6	1521	1521	4.2	4.2
17 Mendon			OF/GS		6.4	12.3	757	757	2.1	2.1
18 Mendon			OF/GS/IB		71.2	7.7	6538	6538	18.2	18.2
19 Mendon			GS/CB		2.6	22.3	495	495	1.4	1.4
20 Mendon			OF/GS		108.3	7.0	9577	9577	26.6	26.6
23 Mendon			CB/OF		19.8	5.1	1981	1981	5.5	5.5
24 Mendon			GS/OF		30.0	1.3	2040	2040	5.7	5.7
25 Mendon			GS/OF		4.7	11.2	518	518	1.4	1.4
26 Mendon			GS/CB		3.9	16.0	551	551	1.5	1.5
27 Mendon			GS/CB		3.4	8.6	329	329	0.9	0.9
28 Mendon			OF		22.2	2.3	1562	1562	4.3	4.3
29 Mendon	4	Modify existing pond to meet 9050 permit requirements	MOD/OF/CB/WP	6500-9010	111.4	6.4	7407	5926	24.0	21.6
30 Mendon			CB/GS		1.6	36.5	525	525	1.5	1.5
31 Mendon			GS/CB		1.6	32.2	459	459	1.3	1.3
32 Mendon			CB/GS		0.4	97.5	480	480	1.3	1.3
33 Mendon			GS		0.5	34.9	153	153	0.4	0.4
34 Mendon			OF		0.5	80.6	424	424	1.2	1.2
35 Mendon			GS		1.3	32.9	384	384	1.1	1.1
36 Mendon			EDPMP/GS/CB/OF	3363-9015	24.1	8.0	2246	2246	6.2	6.2
37 Mendon	1	Infiltration basin below VTrans garage	IB/CB/GS		21.0	22.3	4031	403	11.2	1.1
38 Mendon			CB/GS		13.6	11.6	1534	1534	4.3	4.3
39 Mendon			CB/OF		7.1	14.1	916	916	2.5	2.5
40 Mendon			OF		18.1	6.8	1588	1588	4.4	4.4
41 Mendon			OF		49.5	4.4	3829	3829	10.6	10.6
90 Rutland Town	2	Extended Detention Pond at 1605 Town Line Rd	EDP/GS		48.7	17.0	7,295	1,459	20.3	10.1
92 Rutland Town			OF/GS		76.3	8.3	7,246	7,246	20.1	20.1
93 Rutland Town			CB/GS		4.5	15.5	880	880	2.4	2.4
95 Rutland Town			OF/GS		78.3	5.7	6,456	6,456	17.9	17.9
110 Rutland Town			GS/OF		33.1	14.1	4,291	4,291	11.9	11.9
124 Rutland Town			OF		18.5	7.1	1,645	1,645	4.6	4.6
126 Rutland Town			CB/GS		3.4	23.4	679	679	1.9	1.9
127 Rutland Town			CB/GS		20.8	9.8	2,147	2,147	6.0	6.0
128 Rutland Town	4		GS/OF		42.5	39.7	15,530	15,530	43.1	43.1
130 Rutland Town	4		GS		5.2	46.3	2,294	2,294	6.4	6.4
131 Rutland Town	4		GS/OF		39.2	16.1	5,615	5,615	15.6	15.6
132 Rutland Town			OF/WP	3404-9010	18.9	19.3	2,084	2,084	5.8	5.8



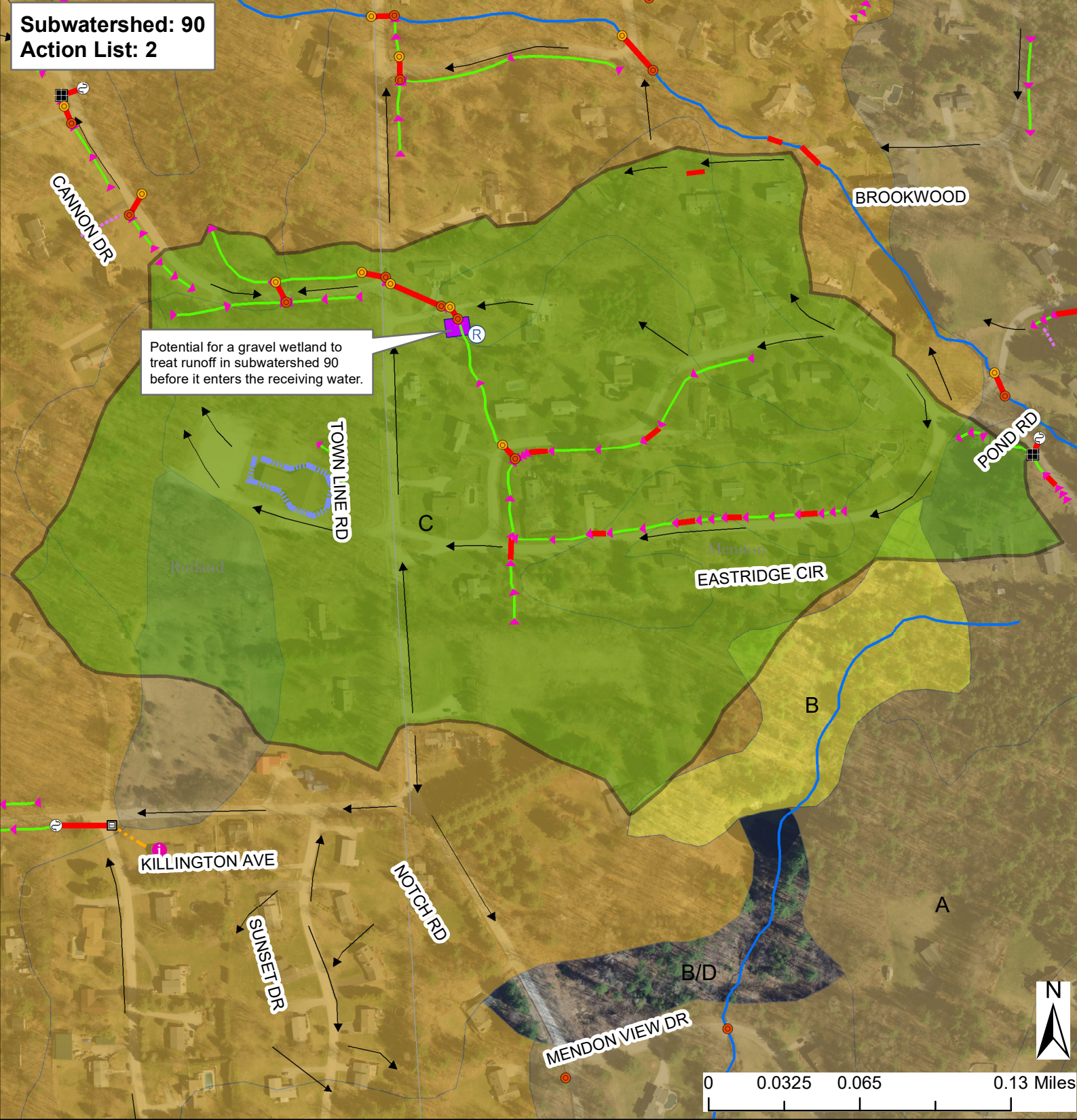
Mendon 2021 - Subwatershed Prioritization and Recommendations									
Watershed Number	Water Quality Volume (Acre-Feet)	Channel Protection (Acre-Feet)	Estimated Basin Construction Cost	Estimated Other BMP Construction Cost	Cost of Sediment Removal Per Pound (based on annual sediment load)	Cost of Phosphorus or Nitrogen Removal Per Pound (based on annual nutrient load)	Assistance Program	# LID-Roof Raingardens to Treat Water Quality Volume	Raingarden Cost
2 Mendon	1.46	2.53					CWIP, SRF, LCBP	728	\$335,092
3 Mendon	0.41	0.23		\$75,000	\$13	\$37,077	CWIP, SRF, LCBP	206	\$94,760
4 Mendon	0.16	0.28					CWIP, SRF, LCBP	82	\$37,559
5 Mendon	0.17	0.35	\$154,132		\$58	\$20,702	CWIP, SRF, LCBP	84	\$38,753
6 Mendon	0.12	0.18					CWIP, SRF, LCBP	60	\$27,613
7 Mendon	0.07	0.06					CWIP, SRF, LCBP	34	\$15,604
8 Mendon	0.05	0.05					CWIP, SRF, LCBP	25	\$11,421
9 Mendon	0.06	0.12					CWIP, SRF, LCBP	31	\$14,313
10 Mendon	0.04	0.05					CWIP, SRF, LCBP	19	\$8,619
11 Mendon	0.06	FALSE					CWIP, SRF, LCBP	32	\$14,728
12 Mendon	0.02	0.04					CWIP, SRF, LCBP	11	\$5,102
14 Mendon	1.07	FALSE					CWIP, SRF, LCBP	537	\$247,075
15 Mendon	0.41	0.36					CWIP, SRF, LCBP	205	\$94,186
16 Mendon	0.09	0.19					CWIP, SRF, LCBP	43	\$19,798
17 Mendon	0.04	0.09					CWIP, SRF, LCBP	21	\$9,849
18 Mendon	0.37	0.60					CWIP, SRF, LCBP	185	\$85,077
19 Mendon	0.03	0.06					CWIP, SRF, LCBP	14	\$6,442
20 Mendon	0.54	0.84					CWIP, SRF, LCBP	271	\$124,626
23 Mendon	0.11	0.11					CWIP, SRF, LCBP	56	\$25,773
24 Mendon	0.12	0.04					CWIP, SRF, LCBP	58	\$26,550
25 Mendon	0.03	0.06					CWIP, SRF, LCBP	15	\$6,740
26 Mendon	0.03	0.07					CWIP, SRF, LCBP	16	\$7,172
27 Mendon	0.02	0.03					CWIP, SRF, LCBP	9	\$4,283
28 Mendon	0.09	0.06					CWIP, SRF, LCBP	44	\$20,333
29 Mendon	0.70	0.79		\$20,000	\$13	\$8,331	CWIP, SRF, LCBP	349	\$160,653
30 Mendon	0.03	0.06					CWIP, SRF, LCBP	15	\$6,832
31 Mendon	0.03	0.06					CWIP, SRF, LCBP	13	\$5,976
32 Mendon	0.03	0.04					CWIP, SRF, LCBP	14	\$6,246
33 Mendon	0.01	0.02					CWIP, SRF, LCBP	4	\$1,985
34 Mendon	0.02	0.04					CWIP, SRF, LCBP	12	\$5,522
35 Mendon	0.02	0.05					CWIP, SRF, LCBP	11	\$4,996
36 Mendon	0.13	0.21					CWIP, SRF, LCBP	64	\$29,228
37 Mendon	0.23	0.52	\$208,649		\$58	\$20,702	CWIP, SRF, LCBP	114	\$52,460
38 Mendon	0.09	0.17					CWIP, SRF, LCBP	43	\$19,962
39 Mendon	0.05	0.11					CWIP, SRF, LCBP	26	\$11,921
40 Mendon	0.09	0.14					CWIP, SRF, LCBP	45	\$20,658
41 Mendon	0.22	0.24					CWIP, SRF, LCBP	108	\$49,826
90 Rutland Town	0.41	FALSE	\$125,851		\$22	\$12,421	CWIP, SRF, LCBP	206	
92 Rutland Town	0.41	FALSE					CWIP, SRF, LCBP	205	
93 Rutland Town	0.05	FALSE					CWIP, SRF, LCBP	25	
95 Rutland Town	0.37	FALSE					CWIP, SRF, LCBP	183	
110 Rutland Town	0.24	FALSE					CWIP, SRF, LCBP	121	
124 Rutland Town	0.09	FALSE					CWIP, SRF, LCBP	47	
126 Rutland Town	0.04	FALSE					CWIP, SRF, LCBP	19	
127 Rutland Town	0.12	FALSE					CWIP, SRF, LCBP	61	
128 Rutland Town	0.88	FALSE					CWIP, SRF, LCBP	439	
130 Rutland Town	0.13	FALSE					CWIP, SRF, LCBP	65	
131 Rutland Town	0.32	FALSE					CWIP, SRF, LCBP	159	
132 Rutland Town	0.12	FALSE					CWIP, SRF, LCBP	59	

# *Target Maps*

*Showing Priority Action List  
Drainage Areas*

*And Potential Retrofit Locations*

**Subwatershed: 90**  
**Action List: 2**



## Mendon, VT

DEC Stormwater Infrastructure Mapping Project

This map shows high priority subwatersheds which are ranked by connectedness, percent of impervious cover, field observations, and potential retrofit measures and locations.

The data shown on this map is only as accurate as the available sources and field observations allowed and should be used as a basic planning level tool only.



### Stormwater points

- Pipe Cross (not connected)
- Catchbasin
- Dry Well
- Drop Inlet
- Grate/Curb Inlet
- Yard drain
- CB tied to sanitary sewer
- Junction Box
- Stormwater Manhole
- Outfall
- Culvert inlet
- Culvert outlet
- Control Structure
- Treatment feature (see notes)
- Retrofit
- Unknown Point
- Information Point

### Stormwater line

- Storm line
- Storm line (old Sanitary line)
- Tunnel (storm)
- Combined sewer
- Sanitary line
- Swale
- Footing drain
- Under drain
- Roof drain
- Infiltration pipe
- French drain
- Trench drain
- Emergency spillway
- Stream
- Overland flow

### NRCS - Soils

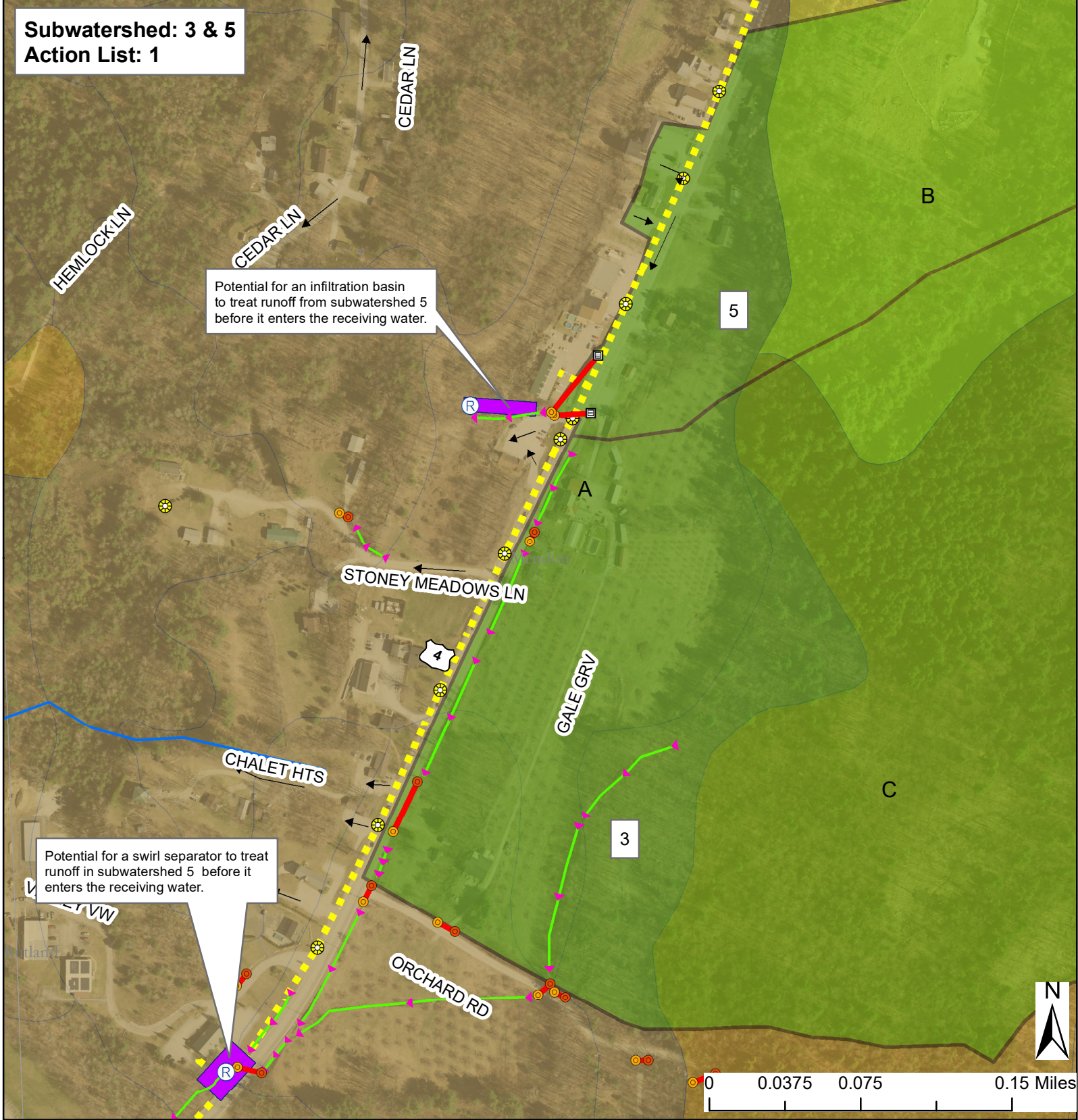
- A
- B
- C
- D

### SubwatershedID

- Priority Subwatershed
- Stormwater Treatment Area
- Potential Stormwater Treatment Area

Creator: Jim Pease, David Ainley  
DEC - WID - Clean Water Initiative Program  
Plotted Date: 9/20/2021  
Data Sources: VTRANS Roads data, VT Hydrography data set, DEC Stormwater database, NRCS soils survey  
Imagery Source: VCGI Best Available Imagery

**Subwatershed: 3 & 5**  
**Action List: 1**

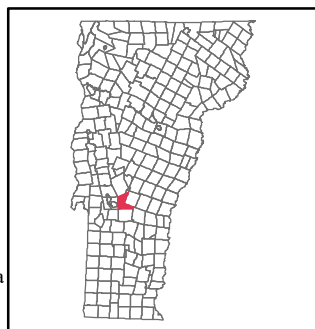


## Mendon, VT

DEC Stormwater Infrastructure Mapping Project

This map shows high priority subwatersheds which are ranked by connectedness, percent of impervious cover, field observations, and potential retrofit measures and locations.

The data shown on this map is only as accurate as the available sources and field observations allowed and should be used as a basic planning level tool only.



### Stormwater points

- Pipe Cross (not connected)
- Catchbasin
- Dry Well
- Drop Inlet
- Grate/Curb Inlet
- Yard drain
- CB tied to sanitary sewer
- Junction Box
- Stormwater Manhole
- Outfall
- Culvert inlet
- Culvert outlet
- Control Structure
- Treatment feature (see notes)
- Retrofit
- Unknown Point
- Information Point

### Stormwater line

- Storm line
- Storm line (old Sanitary line)
- Tunnel (storm)
- Combined sewer
- Sanitary line
- Swale
- Footing drain
- Under drain
- Roof drain
- Infiltration pipe
- French drain
- Trench drain
- Emergency spillway
- Stream
- Overland flow

### NRCS - Soils

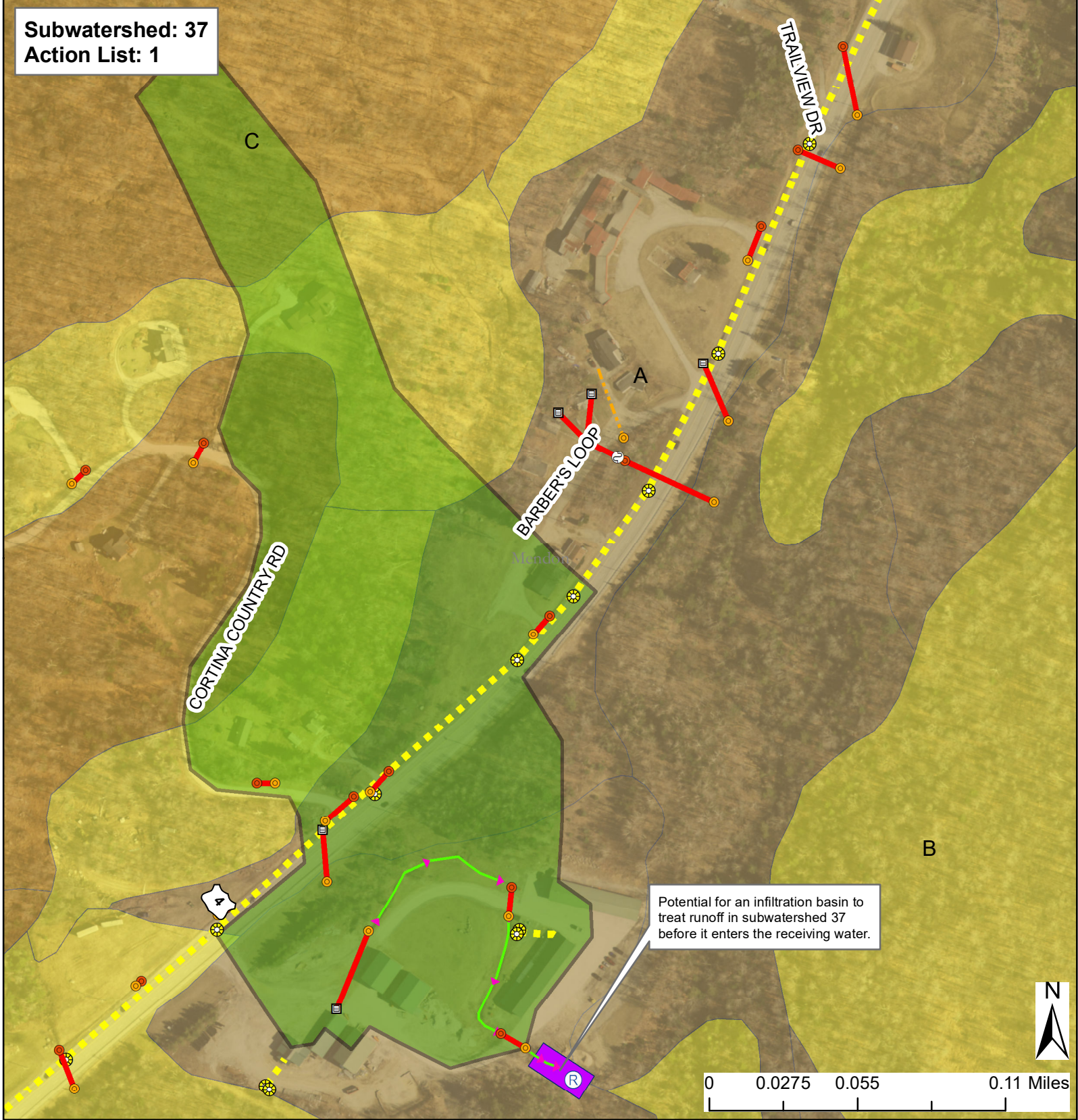
- A
- B
- C
- D

### SubwatershedID

- Priority Subwatershed
- Stormwater Treatment Area
- Potential Stormwater Treatment Area

Creator: Jim Pease, David Ainley  
 DEC - WID - Clean Water Initiative Program  
 Plotted Date: 9/20/2021  
 Data Sources: VTRANS Roads data, VT Hydrography data set, DEC Stormwater database, NRCS soils survey  
 Imagery Source: VCGI Best Available Imagery

**Subwatershed: 37**  
**Action List: 1**

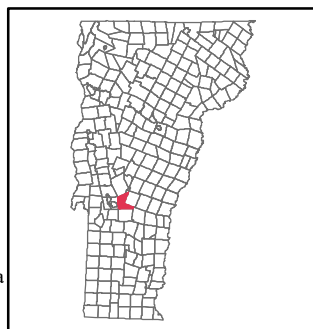


## Mendon, VT

DEC Stormwater Infrastructure Mapping Project

This map shows high priority subwatersheds which are ranked by connectedness, percent of impervious cover, field observations, and potential retrofit measures and locations.

The data shown on this map is only as accurate as the available sources and field observations allowed and should be used as a basic planning level tool only.



### Stormwater points

- Pipe Cross (not connected)
- Catchbasin
- Dry Well
- Drop Inlet
- Grate/Curb Inlet
- Yard drain
- CB tied to sanitary sewer
- Junction Box
- Stormwater Manhole
- Outfall
- Culvert inlet
- Culvert outlet
- Control Structure
- Treatment feature (see notes)
- Retrofit
- Unknown Point
- Information Point

### Stormwater line

- Storm line
- Storm line (old Sanitary line)
- Tunnel (storm)
- Combined sewer
- Sanitary line
- Swale
- Footing drain
- Under drain
- Roof drain
- Infiltration pipe
- French drain
- Trench drain
- Emergency spillway
- Stream
- Overland flow

### NRCS - Soils

- A
- B
- C
- D

### SubwatershedID

- Priority Subwatershed
- Stormwater Treatment Area
- Potential Stormwater Treatment Area

Creator: Jim Pease, David Ainley  
DEC - WID - Clean Water Initiative Program  
Plotted Date: 9/20/2021  
Data Sources: VTRANS Roads data, VT Hydrography data set, DEC Stormwater database, NRCS soils survey  
Imagery Source: VCGI Best Available Imagery

*Spill Control*

*and*

*Vermont Hazardous Waste Management  
Regulations*



### Urethane Drain Protector

Urethane Drain Protectors are positive sealing drain covers that ensure spills do not enter drains. Drain Protectors are environmentally safe and resistant to chemicals, solvents and hydrocarbons. After use, the Drain Protector can be washed and stored in its tube storage container.



### Absorbent Socks

Absorbent socks are flexible tubes used to contain and clean-up spilled fluids. Socks are widely used in industrial applications and are ideal for Spill Kits. Fast spreading spills are quickly stopped with a sock.



### Drums & Intermediate Bulk Containers (IBC's)

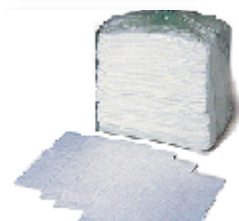
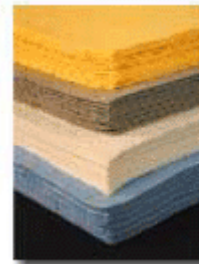
New and reconditioned steel drums are ideal for storing solid and liquid waste. Poly drums available for durable outdoor storage or for building your own spill kits. Steel and poly drums are available in both tight-head (TH) and full open-head styles (FOH).



### Pads & Rolls

Absorbent pads and rolls made from polypropylene fibers are the most popular form of absorbents on the market. Various types of absorbent pads and rolls can be used for different liquids and site applications.

The most widely used absorbent pads and rolls are oil-only (white) and universal (grey). Pads and rolls are great for spills on land, easily absorbing 20 to 25 times their own weight in recovered liquid. Rolls can easily be cut to the exact size required.



water or

### Booms

#### Linkable Absorbent Booms

Absorbent booms are ideal for containing and cleaning up spills on water. Booms repel water and float even when completely saturated. Absorbent booms are constructed with a strong mesh outer skin encasing non-linting and highly absorbent polypropylene filler. Linkable booms come complete with end rings and clips attached to nylon rope running the length of the boom.





### **Collection basins**

Collection basins are permanent structures in which large spills or contaminated storm water is contained and stored before cleanup or treatment. Collection basins are designed to receive spills, leaks, etc., and to prevent pollutants from being released into the environment. Unlike containment dikes, collection basins can receive and contain materials from many locations across a facility.

### **Containment diking**

Containment dikes are temporary or permanent earth or concrete berms or retaining walls that are designed to hold spills. Diking can be used at any industrial facility, but is most common for controlling large spills or releases from liquid storage and transfer areas. Diking can provide one of the best protective measures against the contamination of storm water because it surrounds the area of concern and keeps spilled materials separated from the storm water outside of the diked area.

### **Curbing**

Similar to containment diking, a curb is a barrier that surrounds an area of concern. Unlike diking, curbing is unable to contain large spills and is usually implemented on a small-scale basis. However, curbing is common at many facilities and in small areas where liquids are handled and transferred.

### **Granular Absorbents**

A variety of granular and powdered absorbents are available for the effective clean-up of spills on streets, construction sites and in repair shops. These products absorb spilled liquids of various kinds to greatly lower the viscosity, aiding in the clean-up of the spill.

### **Sorbents, Gels, and Foams**

Sorbents are compounds that immobilize materials by surface absorption or adsorption in the sorbent bulk. Gelling agents interact with the spilled chemical(s) by concentrating and congealing to form a rigid or viscous material more conducive to a mechanical cleanup. Foams are mixtures of air and aqueous solutions of proteins and surfactant-based foaming agents. The primary purpose of foams is to reduce the vapor concentration above the spill surface, thereby controlling the rate of evaporation.

## **§ 7-105 EMERGENCY AND CORRECTIVE ACTIONS**

### **(a) Emergency actions**

(1) In the event of a discharge of hazardous waste or a release of a hazardous material, the person in control of such waste or material shall:

(A) Take all appropriate immediate actions to protect human health and the environment including, but not limited to, emergency containment measures and notification as described below; and

(B) Take any further clean up actions as may be required and approved by federal, state, or local officials, or corrective actions as specified under **subsection (b)** of this section so that the discharged waste or released material and related contaminated materials no longer present a hazard to human health or the environment.

### **(2) Reporting**

(A) All discharges and/or releases that meet any of the following criteria shall be immediately reported to the Secretary by the person or persons exercising control over such waste by calling the Waste Management Division at **(802) 241-3888**, Monday

through Friday, 7:45 a.m. to 4:30 p.m. or the Department of Public Safety, Emergency Management Division at **(800) 641-5005**, 24 hours/day:

(i) A discharge of hazardous waste, or release of hazardous material that exceeds 2 gallons;

(ii) A discharge of hazardous waste, or release of hazardous material that is less than or equal to 2 gallons and poses a potential or actual threat to human health or the environment; or

(iii) A discharge of hazardous waste, or release of hazardous material that equals or exceeds its corresponding reportable quantity under CERCLA as specified under **40 CFR § 302.4**.

Note: Under the Federal Water Pollution Control Act, certain spills of “oil” and/or “hazardous substances” are prohibited and must be reported pursuant to the requirements of **40 CFR Part 110 / Discharge of Oil**. Certain spills of hazardous substances must also be reported pursuant to CERCLA. In both cases, the National Response Center must be notified at **(800) 424-8802**. Finally, in addition to federal and state spill reporting, EPCRA requires that spills are also reported to local authorities.

(B) A written report shall be submitted to the Secretary within ten (10) days following any discharge or release subject to **subsection (a)(1)** of this section. The report should be sent to: The Vermont Department of Environmental Conservation, Waste Management Division, 103 South Main Street, Waterbury, VT 05671-0404. The person responsible for submitting the written report may request that it not be submitted for small discharges and/or releases that were reported pursuant to subsection (a)(2)(A) of this section, and that have been entirely remediated within the ten (10) day period immediately following the discharge and/or release

(3) If the discharge or release occurred during transportation, the transporter shall, in addition to notifying the Secretary:

(A) Notify the National Response Center at (800) 424-8802 or (202) 426-2675, if required by **49 CFR § 171.15**; and

(B) Report in writing to the Director, Office of Hazardous Materials Regulations, Materials Transportation Bureau, Department of Transportation, Washington, D.C. 20590, if required by **49 CFR § 171.16**; and

(C) A water (bulk shipment) transporter who has discharged hazardous wastes must give the same notice as required by **33 CFR § 153.203** for oil and hazardous substances.

(4) If a discharge or release occurs and the Secretary determines that immediate removal of the waste is necessary to protect human health or the environment, the Secretary may authorize its removal by unpermitted transporters without the preparation of a manifest. Such hazardous waste may be transported to a site authorized by the Secretary under the provisions of **§ 7-503** to temporarily accept hazardous waste generated during an emergency cleanup of a discharge or release.

(5) In the case of an explosives or munitions emergency response, if a Federal, State, Tribal or local official acting within the scope of his or her official responsibilities, or an explosives or munitions emergency response specialist, determines that immediate removal of the material or waste is necessary to protect human health or the environment, that official or specialist may authorize the removal of the material or waste by transporters who do not have EPA identification numbers or hold Vermont hazardous waste transportation permits and without the preparation of a manifest. In the case of emergencies involving military munitions, the responding military emergency response specialist's organizational unit must retain records for three years identifying the dates of the response,

the responsible persons responding, the type and description of material addressed, and its disposition.

(6) All clean up debris and residues that are hazardous waste must be transported ultimately to either:

(A) A designated facility;

(B) A person authorized by the Secretary to use such waste if the waste has been delisted pursuant to § 7-218;

(C) Some other location specified and authorized by the Secretary to receive clean up debris and residues if the waste has been delisted pursuant to § 7-218; or

(D) For hazardous waste not defined as hazardous in 40 CFR Part 261 (i.e., waste regulated as hazardous by Vermont), to a facility, that is not a designated facility, located in a state other than Vermont provided the facility can receive such waste under applicable state and local laws, regulations and ordinances.

(b) Corrective actions

(1) If a discharge of hazardous waste, or a release of hazardous material has not been adequately addressed under **subsection (a)(1)(A)** of this section the Secretary may require that the person or persons responsible pursuant to **10 V.S.A. § 6615** complete the following:

(A) Engage the services of an environmental consultant experienced in the investigation and remediation of hazardous waste-contaminated sites; and

(B) Within thirty (30) days from either the date of the discharge/release or the date that the release was discovered if the date of discharge/release is not known, or within a period of time established by an alternative schedule approved by the Secretary, submit for approval by the Secretary a work plan for an investigation of the contaminated site (i.e., site investigation) prepared by the environmental consultant. The site investigation shall define the nature, degree and extent of the contamination; and shall assess potential impacts to human health and the environment (refer to the document titled: "Site Investigation Procedure" which is available from the Secretary upon request); and

(C) Perform the site investigation within either ninety (90) days of receiving written approval of the work plan by the Secretary, or a period of time established by an alternative schedule approved by the Secretary. A report detailing the findings of the site investigation shall be sent to the Secretary for review; and

(D) Within either thirty (30) days from the date of final acceptance of the site investigation report by the Secretary, or a period of time established by an alternative schedule approved by the Secretary, submit a corrective action plan prepared by the environmental consultant (refer to the document titled:

"Corrective Action Guidance" which is available from the Secretary upon request); and

(E) Implement the corrective action plan within either ninety (90) days of receiving written approval of the plan by the Secretary, or a period of time established by an alternative schedule approved by the Secretary. The corrective action activity shall continue until the contamination is remediated to levels approved by the Secretary; and

(F) Submit to the Secretary all investigative, corrective action and monitoring reports, and all analytical results related to subsections (b)(1)(C) through (E) of this section, as they become available.

(2) A used or fired military munition is a waste and is potentially subject to corrective action authorities pursuant to 10 V.S.A. § 6615, and the process described by subsection (b)(1) of this section if the munition lands off-range and is not promptly rendered safe or retrieved. Any imminent and substantial threats associated with any remaining material must be addressed. If remedial action is infeasible, the operator of the range must maintain a record of the event for as long as any threat remains. The record must include the type of munition and its location (to the extent the location is known).

## § 7-106 LAND DISPOSAL RESTRICTIONS

(a) Certain hazardous wastes shall not be disposed of in or on the land. **40 CFR Part 268**, which is hereby incorporated by reference, except for 40 CFR §§ 268.5, 268.6, and 268.42(b), identifies those wastes which shall not be land disposed and describes the limited circumstances under which an otherwise prohibited waste may continue to be land disposed. The authority for implementing the CFR sections not incorporated by reference remains with the EPA.

**Note:** A copy of 40 CFR Part 268 (the Land Disposal Restrictions rule), as incorporated by these regulations, is available from the Secretary upon request.

(b) In addition to the prohibitions of **40 CFR Part 268**, the Secretary may restrict the land disposal of any hazardous waste in the State of Vermont:

(1) Which may present an undue risk to human health or the environment, immediately or over a period of time; or

(2) Which would be incompatible with the **groundwater protection rule and strategy** of chapter 12 of the environmental protection rules.

(c) Dilution of hazardous waste subject to the land disposal restrictions of **40 CFR Part 268** is prohibited pursuant to **40 CFR § 268.3**.

## § 7-107 ENFORCEMENT

(a) Information that the generation, transportation, treatment, storage or disposal of hazardous waste may present an actual or potential threat to human health or the environment, or is a violation of the 10 V.S.A. chapter 159, or these regulations, or any term or condition of certification, order, or assurance, may serve as grounds for an enforcement action by the Secretary, including, but not limited to:

(1) After notice and opportunity for hearing, issuing an order directing any person to take such steps as are necessary to:

(A) Immediately cease and desist any operation or practice;

(B) Correct or prevent environmental damage likely to result from any deficiency in operation or practice;

(C) Suspend or revoke any certification and require temporary or permanent cessation of the operation of such facility;

(2) A request that the Attorney General or appropriate State's Attorney commence an action for injunctive relief, the imposition of penalties and fines provided in **10 V.S.A. § 6612** and other relief as may be appropriate.

(3) An order for reimbursement to any agency of federal, state, or local government from any person whose act caused governmental expenditures under **10 V.S.A § 1283**.

(4) All other powers of enforcement available to the Secretary through **10 V.S.A., chapter 201**.

(b) The hearing by the Secretary identified under **subsection (a)(1)** of this section shall be conducted as a contested case. Pursuant to **10 V.S.A. § 6610(b)**, the Secretary may issue an emergency order without a prior hearing when an ongoing violation presents an immediate threat of substantial harm to the environment or an immediate threat to public health. An emergency order shall be effective upon actual notice to the person against whom the order is issued. Any person to whom an emergency order is issued shall be given the opportunity for a hearing within five (5) business days of the date the order is issued.

(c) Inspections, investigations, and property access (**10 V.S.A. § 8005**)

(1) Inspections and investigations

(A) An investigator may perform routine inspections to determine compliance.

(B) An investigator may investigate upon receipt or discovery of information that an activity is being or has been conducted that may constitute or cause a violation.

(C) An investigator, upon presentation of credentials, may seek permission to inspect or investigate any portion of the property, fixtures, or other appurtenances belonging to or used by a person whose activity is required to be in compliance. The investigator shall state the purpose of the inspection or investigation. An inspection or investigation may include monitoring, sampling, testing, and copying of any records, reports, or other documents relating to the purposes to be served by compliance.

(D) If permission for an inspection or investigation is refused, the investigator may seek an access order from the district or superior court in whose jurisdiction the property is located enabling the investigator to perform the inspection or investigation.

(2) Access orders

(A) If access has been refused, an access order may be sought pursuant to either **10 V.S.A. § 8005** or **10 V.S.A. § 6609**.

(B) Issuance of an access order shall not negate the Secretary's authority to initiate criminal proceedings in the same matter by referring the matter to the office of the attorney general or a state's attorney.

(d) In an action to enforce these regulations, anyone raising a claim that a certain material is not a hazardous waste, or is exempt from regulation as hazardous waste, must demonstrate that there is a known market or disposition for the material, and that they meet the terms of the exclusion or exemption. Appropriate documentation (such as contracts showing that a second person uses the material as an ingredient in a production process) to demonstrate that the material is not a waste, or is exempt from regulation, must be provided. Owners and operators of facilities claiming that they are actually recycling materials must show that they have the necessary equipment to do so.